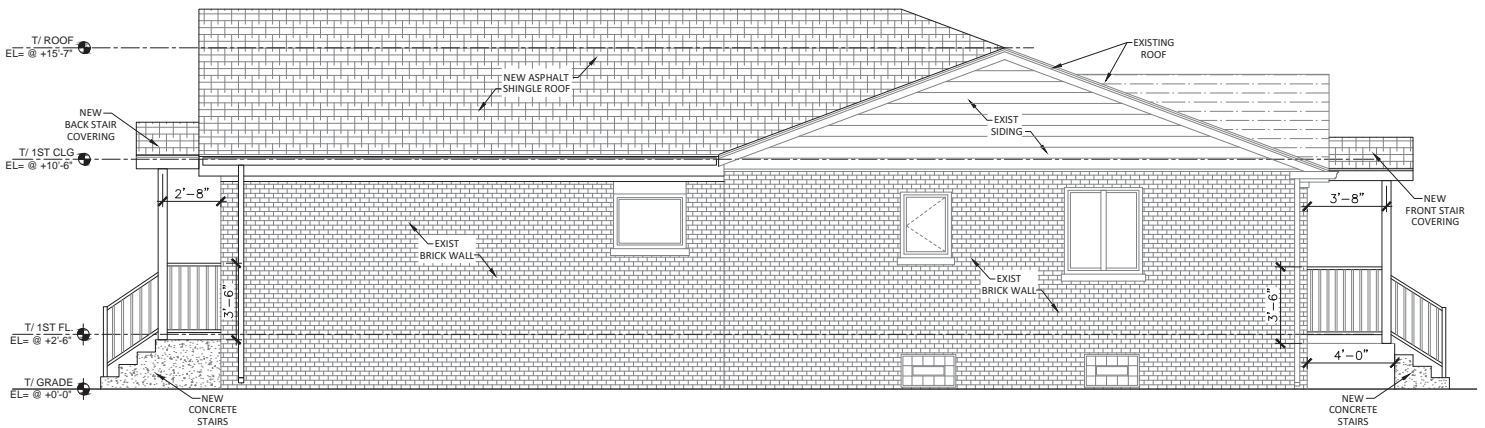


**ARCH. FRONT ELEVATION**

3/16" = 1'-0"

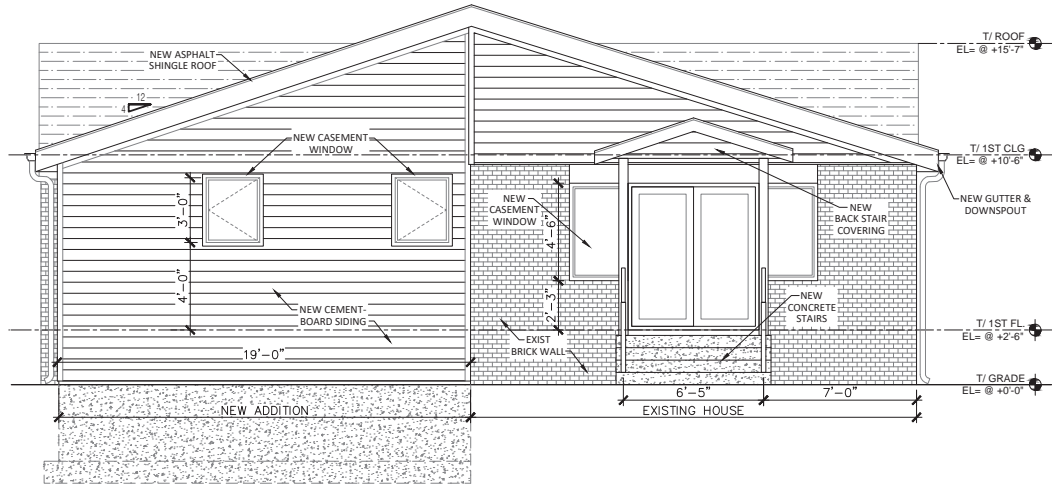
**8650 KEYSTONE AVE ELEVATIONS**



**ARCH. LEFT ELEVATION**

1/4" = 1'-0"

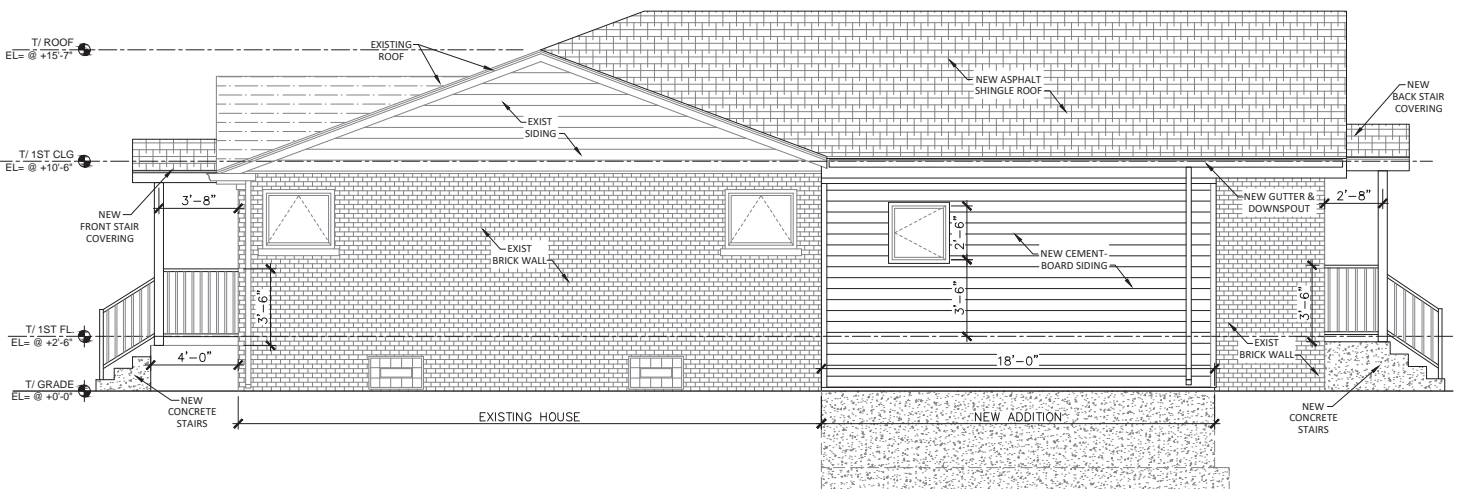
**8650 KEYSTONE AVE ELEVATIONS**



**ARCH. REAR ELEVATION**

1/4" = 1'-0"

**8650 KEYSTONE AVE ELEVATIONS**



**ARCH. RIGHT ELEVATION**

1/4" = 1'-0"

**8650 KEYSTONE AVE ELEVATIONS**