

CH91194A - Heltzer RT

5135 Golf Rd  
Skokie, IL 60077

Facing West

T-Mobile

EXISTING

WT Group  
Engineering • Design • Consulting

Disclaimer: This photo simulation is an artist's depiction of a future installation. The actual construction may vary slightly in size, layout, color and texture from this simulation.

CH91194A - Heltzer RT

5135 Golf Rd  
Skokie, IL 60077

Facing West

T-Mobile

PROPOSED

WT Group  
Engineering • Design • Consulting

Disclaimer: This photo simulation is an artist's depiction of a future installation. The actual construction may vary slightly in size, layout, color and texture from this simulation.

COPYRIGHT © THE W.T. GROUP, LLC

COPYRIGHT © THE W.T. GROUP, LLC

NOTE:  
THE ANTENNA AND EQUIPMENT OF SUCH A CO-LOCATED WIRELESS COMMUNICATION FACILITY MUST BE OF NEUTRAL COLOR THAT IS IDENTICAL TO, OR CLOSELY COMPATIBLE WITH, THE COLOR OF THE SUPPORTING BUILDING.

NOTE:  
THE ANTENNA, RRUS CABLES, AND MOUNTING HARDWARE PAINTED TO MATCH EXISTING BUILDING



PLANS PREPARED BY:  
**W-T COMMUNICATION DESIGN GROUP, LLC**  
COMMERCIAL SPECIALISTS  
3015 Plaster Avenue  
Naperville, Illinois 60563  
PH: (630) 226-0222 FAX: (630) 226-0444  
www.wtgroup.com  
IL License No. 184-000750-0015 Exp. 04/30/20

AE LICENSE

JEFFERY GUTOWSKI  
PROFESSIONAL ENGINEER  
STATE OF ILLINOIS  
LICENSE # 042-047225  
EXPIRES 11/03/21 NONE

REVISIONS	DATE	DESCRIPTION	BY	REV
101118		FOR CLIENT REVIEW	JEL	A
102918		REVISIONS	JEL	B
102918		REVISIONS	JEL	C
032019		FINAL	AKP	D
050520		STEALTH LEASE EXHIBIT	RLD	D

REVISIONS	DATE	DESCRIPTION	BY	REV
101118		FOR CLIENT REVIEW	JEL	A
102918		REVISIONS	JEL	B
102918		REVISIONS	JEL	C
032019		FINAL	AKP	D
050520		STEALTH LEASE EXHIBIT	RLD	D

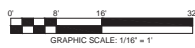
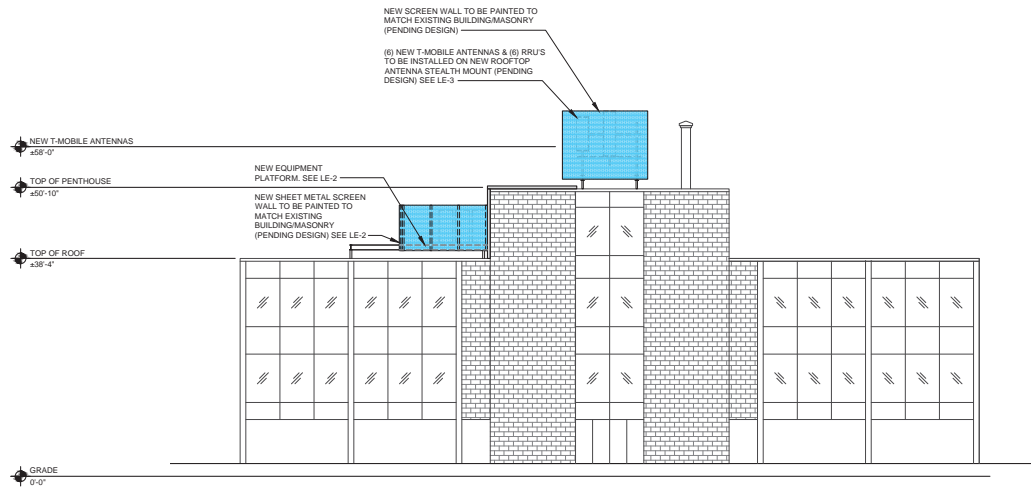
SITE INFORMATION:

**HELTZER RT**  
**CH91194A**  
5135 GOLF RD  
SKOKIE, IL 60077

WT PROJECT NUMBER:  
**T1801302**

SHEET TITLE:  
**ELEVATION**

SHEET NUMBER:  
**LE-4**



**ELEVATION - NORTH VIEW**  
SCALE: 1/16" = 1'-0"

1

- IMPORTANT SITE NOTES:**
- CONTRACTOR WILL NOT START CONSTRUCTION UNTIL AFTER THEY HAVE RECEIVED THE PRE-CON PACKAGE AND HAVE A PRE-CON WALK WITH THE PROJECT MANAGER.
  - CONTRACTOR TO HIRE PUBLIC (811) AND PRIVATE LOCATING SERVICE IN ORDER TO LOCATE AND PROTECT ALL SURFACE UTILITIES. DO NOT SCALE OFF THESE PLANS FOR ANY BELOW GRADE UTILITIES.
  - CONTRACTOR SHALL VERIFY ALL EXISTING BURIED AND OVERHEAD UTILITIES PRIOR TO EXCAVATION. CONTRACTOR SHALL REPAIR ALL DAMAGED UTILITIES AT HIS OWN COST AND COORDINATE ANY REPAIRS WITH RESPECTIVE UTILITY COMPANY.
  - CONTRACTOR TO VERIFY ALL HEIGHTS AND ADJUST IN FIELD PRIOR TO CONSTRUCTION. CONTRACTOR SHALL NOTIFY T-MOBILE AND ENGINEERING FIRM OF ANY DISCREPANCIES BEFORE PROCEEDING.
  - CONTRACTOR SHALL RESTORE AND REPAIR ANY DAMAGED AREAS CAUSED BY CONSTRUCTION.

NEW HYBRID JUMPER LENGTH	ACTUAL LENGTH	ACTUAL LENGTH +10% SAFETY FACTOR	FACTORY LENGTH
FROM ROOFTOP OVP TO ALPHA SECTOR RRUS	① ±60'-0"	±66'-0"	90'-0"
FROM ROOFTOP OVP TO BETA SECTOR RRUS	② ±56'-0"	±61'-7"	90'-0"
FROM ROOFTOP OVP TO GAMMA SECTOR RRUS	③ ±63'-0"	±69'-4"	90'-0"

GPS ANTENNA CABLE LENGTH	ACTUAL LENGTH	ACTUAL LENGTH +10% SAFETY FACTOR	FACTORY LENGTH
①	±10'-0"	±11'-0"	±08'-0" (30 M)



PLANS PREPARED BY:  
**W-T COMMUNICATION DESIGN GROUP, LLC**  
COMMERCIAL SPECIALISTS  
3015 Plaster Avenue  
Naperville, Illinois 60563  
PH: (630) 226-0222 FAX: (630) 226-0444  
www.wtgroup.com  
IL License No. 184-000750-0015 Exp. 04/30/20

AE LICENSE

JEFFERY GUTOWSKI  
PROFESSIONAL ENGINEER  
STATE OF ILLINOIS  
LICENSE # 042-047225  
EXPIRES 11/03/21 NONE

REVISIONS	DATE	DESCRIPTION	BY	REV
101118		FOR CLIENT REVIEW	JEL	A
102918		REVISIONS	JEL	B
102918		REVISIONS	JEL	C
032019		FINAL	AKP	D
050520		STEALTH LEASE EXHIBIT	RLD	D

REVISIONS	DATE	DESCRIPTION	BY	REV
101118		FOR CLIENT REVIEW	JEL	A
102918		REVISIONS	JEL	B
102918		REVISIONS	JEL	C
032019		FINAL	AKP	D
050520		STEALTH LEASE EXHIBIT	RLD	D

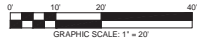
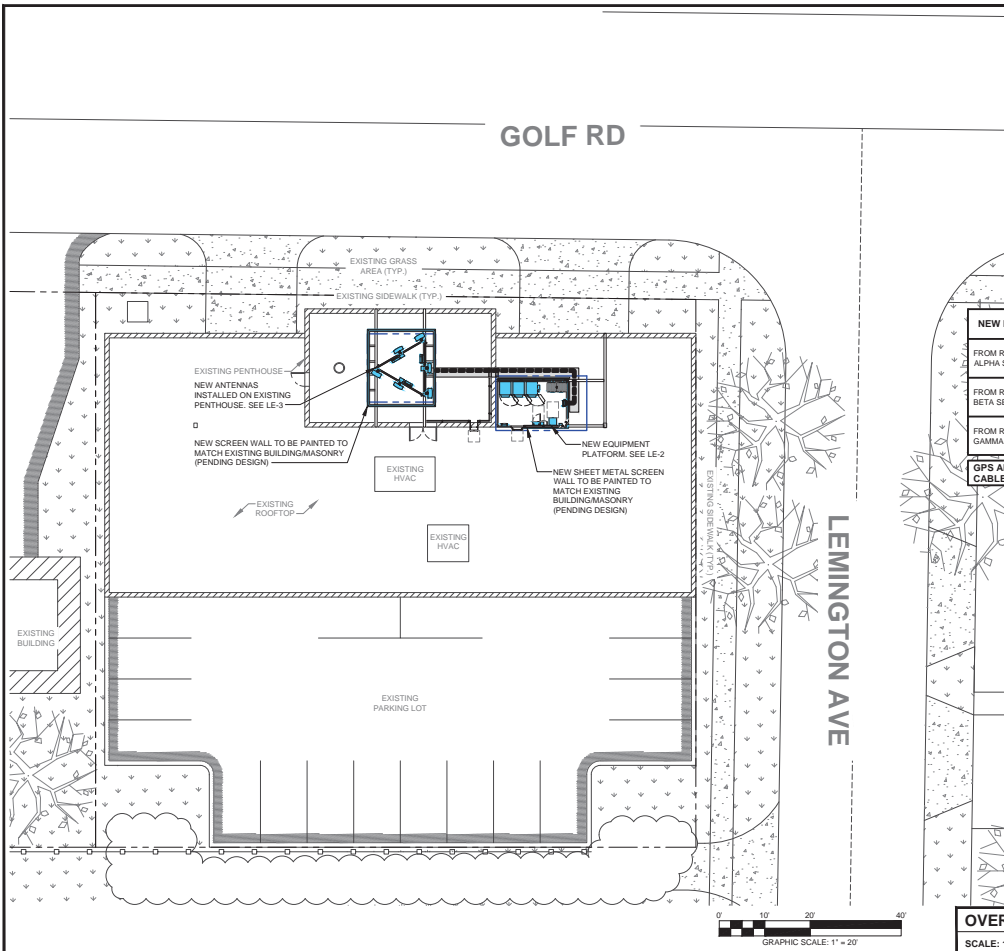
SITE INFORMATION:

**HELTZER RT**  
**CH91194A**  
5135 GOLF RD  
SKOKIE, IL 60077

WT PROJECT NUMBER:  
**T1801302**

SHEET TITLE:  
**OVERALL SITE PLAN**

SHEET NUMBER:  
**LE-1**



**OVERALL SITE PLAN**  
SCALE: 1" = 20'-0"

1