



SOUTH ELEVATION

4550 KIRK, SKOKIE

SCALE: 1/8" = 1'-0"

BRICK = 507 SF SIDING = 197 SF

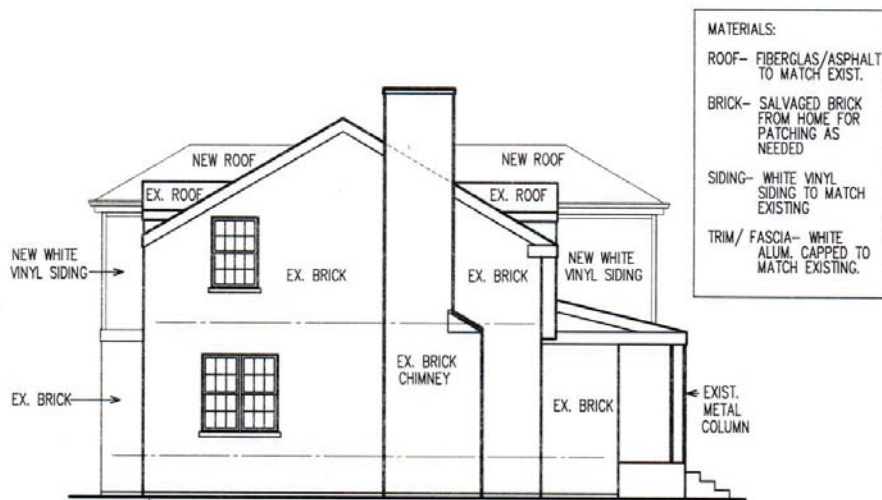


EAST ELEVATION

4550 KIRK, SKOKIE

SCALE: 1/8" = 1'-0"

BRICK = 414 SF SIDING = 362 SF



- MATERIALS:
- ROOF- FIBERGLAS/ASPHALT TO MATCH EXIST.
  - BRICK- SALVAGED BRICK FROM HOME FOR PATCHING AS NEEDED
  - SIDING- WHITE VINYL SIDING TO MATCH EXISTING
  - TRIM/ FASCIA- WHITE ALUM. CAPPED TO MATCH EXISTING.

WEST ELEVATION

4550 KIRK, SKOKIE

SCALE: 1/8" = 1'-0"

BRICK = 656 SF SIDING = 81 SF



NORTH ELEVATION

4550 KIRK, SKOKIE

SCALE: 1/8" = 1'-0"

BRICK = 586 SF SIDING = 103 SF



**SOUTH ELEVATION**



**EAST ELEVATION**



**WEST ELEVATION**

**4550 KIRK, SKOKIE IL  
EXISTING RESIDENCE PHOTOS**



**NORTH ELEVATION**

