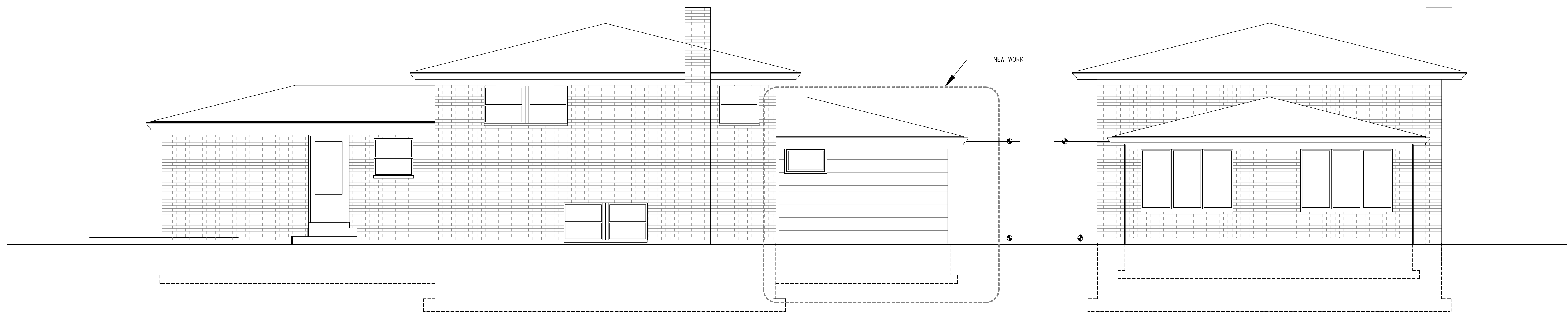


1 NORTH ELEVATION
SCALE: 1/4"=1'-0"

3 WEST ELEVATION
SCALE: 1/4"=1'-0"



2 EAST ELEVATION
SCALE: 1/4"=1'-0"

4 SOUTH ELEVATION
SCALE: 1/4"=1'-0"
NO WORK. FOR REFERENCE ONLY.

REVISIONS

1	
2	
3	