

# T-Mobile stick together

**SITE NUMBER:** CH91194A

**SITE NAME:** HELTZER RT

**SITE TYPE:** ROOFTOP

**JURISDICTION:** VILLAGE OF SKOKIE

**CITY:** SKOKIE

**COUNTY:** COOK

**LOCATION MAP**



**AERIAL MAP**



**PROJECT DESCRIPTION**  
NEW ROOFTOP PLATFORM WITHIN EX-127-2021-016-001 PLATFORM. NO NEW WATER OR SEWER SHOWN AS FACILITY PLATFORM BUILD OUT.

**TABLE BUILD OUT:**  
TABLE WITH 120" X 48" X 12" ANTENNA SPECIFIC RING, 4" MODULATED FRAME, 1/2" ASK CORE MODULES, 115 SYSTEM, 1" RECEPTOR, (3) CABINETS, (8) RAIL MODULES, 115 SYSTEM, 1" MODULATED FRAME, 1/2" ASK CORE MODULES, 115 SYSTEM, 1" RECEPTOR, (1) RAIL CAPACITY MODULE ON NEW POST

**PROPERTY SUMMARY**  
**COORDINATES (NAD83): SITE ADDRESS:**  
LAT: 42.011839° N  
LONG: 87.462030° W  
GRUDE: 624 57 ABL  
DETAILED FROM: 15 ALLEN DATED 8/27/18

**ZONING:**  
DC COMMERCIAL

**TAX ID NUMBER:**  
09-0530-04-0000

**ELECTRIC:**  
COMED  
CONTACT TEL: (994) 344-9911

**FIBER:**  
AT&T  
CONTACT TEL: (994) 589-4900

**APPLICABLE CODES**  
**BUILDING CODE:**  
INTERNATIONAL BUILDING CODE 2012

**ELECTRICAL CODE:**  
NATIONAL ELECTRICAL CODE 2014

**PROJECT TYPE**  
**NSD**

**CONTACTS**

**PROPERTY OWNER:**  
WFO GROUP LLC  
8700 CORKCROFT BLVD  
CONTACT SAJAC WEISS  
TEL: (773) 415-8005

**PROJECT TEAM**

**AAE:**  
THREAT GROUP LLC  
2919 PEARL AVENUE, 6TH FLOOR  
1915 S CLARK ST, 7TH FLOOR  
CONTACT SAJAC WEISS  
TEL: (773) 275-5712  
FAX: (773) 275-5713  
TEL: (524) 583-4444

**APPROVALS**

PENDING APPROVAL OF THE JURISDICTION, THE FOLLOWING PARTIES HAVE REVIEWED THE DESIGN WITHIN THE JURISDICTIONAL BOUNDARIES AND HAVE BEEN ADVISED THAT THE PROPOSED CONSTRUCTION CONTRACTORS MAY NOT START CONSTRUCTION WITHOUT A VOICE TO PROCEED (NTP).

LANDLORD	PROJECT NAME	SIGNATURE	DATE
DEVELOPER			
CONTRACTOR			
AAE/MPR			
OPERATIONS			
ZONING MP			
UTILITIES			

**SHEET INDEX**

SHEET NUMBER	TITLE SHEET	DESCRIPTION
T-1	GENERAL NOTES	
T-2	GENERAL NOTES	
T-3	GENERAL NOTES	
C-1	EMBEDDED SITE PLAN	
C-2	EQUIPMENT ELEVATIONS	
C-3	CABLE TRAY & SITE DETAILS	
C-4	ELEVATION	
A-1	ANTENNA RAIL	
A-2	EQUIPMENT SPECIFICATIONS	
A-3	EQUIPMENT SPECIFICATIONS	
A-4	RISER DRAWING	
A-5	RISER DRAWING	
A-6	ANTENNA CONFIGURATION SHEET	
A-7	OVERALL UTILITIES PLAN	
E-1	UTILITY RISER DRAWING	
E-2	UTILITY RISER DRAWING	
E-3	UTILITY RISER DRAWING	
E-4	UTILITY RISER DRAWING	
G-1	GRADING CONDITIONS PLAN	
G-2	GRADING CONDITIONS PLAN	
G-3	GRADING DETAILS	
SC-1	OVERSIGHT	
ST-1	STRUCTURAL SHEETS	

**SHEET INDEX**

SHEET NUMBER	TITLE SHEET	DESCRIPTION
T-1	GENERAL NOTES	
T-2	GENERAL NOTES	
T-3	GENERAL NOTES	
C-1	EMBEDDED SITE PLAN	
C-2	EQUIPMENT ELEVATIONS	
C-3	CABLE TRAY & SITE DETAILS	
C-4	ELEVATION	
A-1	ANTENNA RAIL	
A-2	EQUIPMENT SPECIFICATIONS	
A-3	EQUIPMENT SPECIFICATIONS	
A-4	RISER DRAWING	
A-5	RISER DRAWING	
A-6	ANTENNA CONFIGURATION SHEET	
A-7	OVERALL UTILITIES PLAN	
E-1	UTILITY RISER DRAWING	
E-2	UTILITY RISER DRAWING	
E-3	UTILITY RISER DRAWING	
E-4	UTILITY RISER DRAWING	
G-1	GRADING CONDITIONS PLAN	
G-2	GRADING CONDITIONS PLAN	
G-3	GRADING DETAILS	
SC-1	OVERSIGHT	
ST-1	STRUCTURAL SHEETS	

**SHEET TITLE**  
**TITLE SHEET**

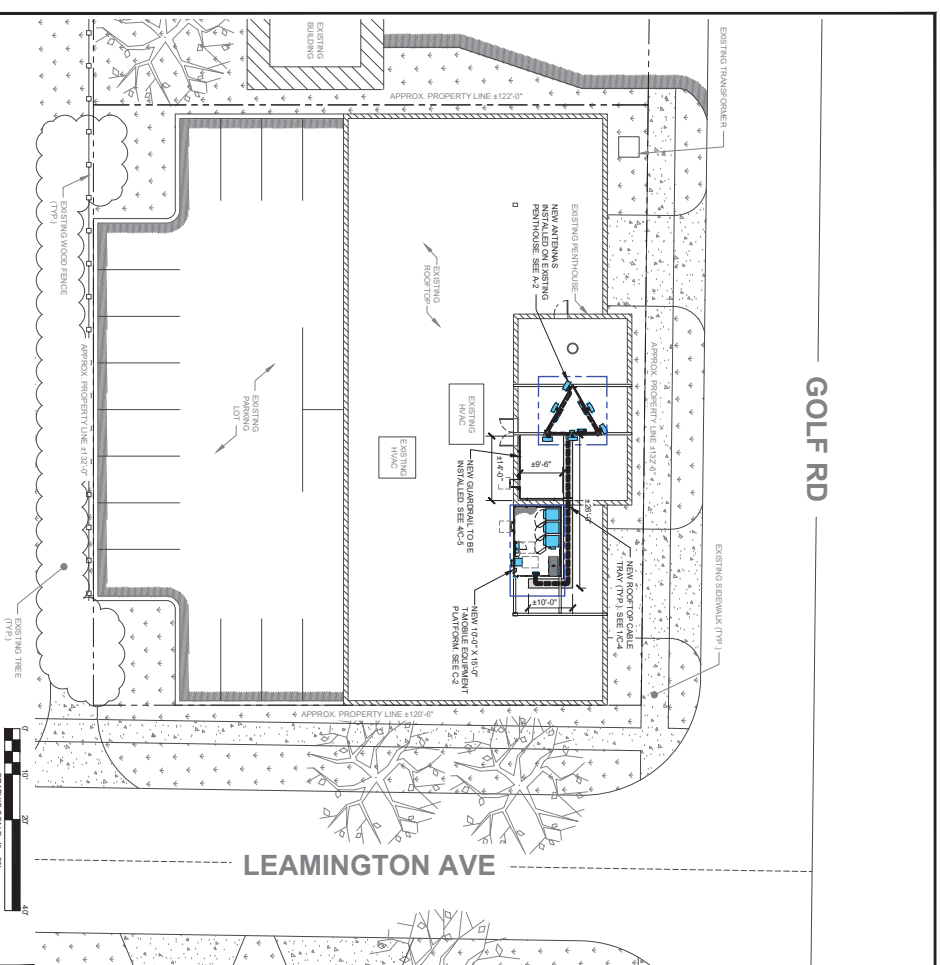
**DATE**  
11/30/2022

**PROJECT NUMBER**  
T-1



**W.F. COMMERCIAL DESIGN, INC.**  
11818 DOLL RD  
SKOKIE, IL 60077

**GOLF RD**



**IMPORTANT SITE NOTES:**

- CONTRACTOR SHALL VERIFY ALL EXISTING BARRED AND OVERHEAD UTILITIES FROM TO EXISTING UTILITIES AT HIS OWN COST AND COMPENSATE ANY REMAINS WITH RESPECTIVE UTILITY COMPANY.
- CONTRACTOR SHALL VERIFY ALL HEIGHTS AND CONSTRUCTION SHALL NOT BY TABLE AND BEFORE RECEIVING.
- CONTRACTOR SHALL RESTORE AND REPAIR ANY DAMAGED AREAS CAUSED BY CONSTRUCTION.

**NOTE:**  
1. TABLE SHALL COORDINATE WITH THE PROPERTY AGENTS TO CONSTRUCT AND MAINTAIN EQUIPMENT AND AROUND THE BUILDING.  
2. NO ENTRY WAS BEEN PRESERVED ON THIS SITE APPROXIMATE LOCATIONS.

FROM ROOFTOP ONE TO ALPHA SECTION BRIS	ACTUAL LENGTH	FACTORY LENGTH
1	150'-0"	150'-0"
2	150'-0"	150'-0"
3	150'-0"	150'-0"

FROM ROOFTOP ONE TO BETA SECTION BRIS	ACTUAL LENGTH	FACTORY LENGTH
1	150'-0"	150'-0"
2	150'-0"	150'-0"
3	150'-0"	150'-0"

FROM ROOFTOP ONE TO GAMMA SECTION BRIS	ACTUAL LENGTH	FACTORY LENGTH
1	150'-0"	150'-0"
2	150'-0"	150'-0"
3	150'-0"	150'-0"

**OVERALL SITE PLAN**

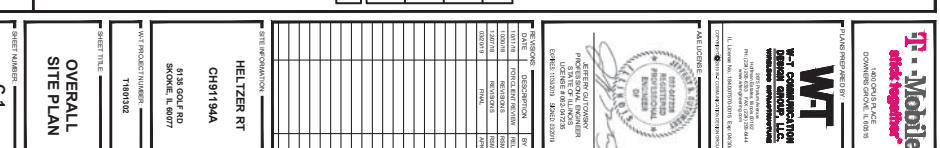
**SCALE:** 1" = 20'-0"

**SHEET NUMBER:** C-1

**DATE:** 11/30/2022

**PROJECT NUMBER:** T-1

**W.F. COMMERCIAL DESIGN, INC.**  
11818 DOLL RD  
SKOKIE, IL 60077

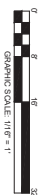
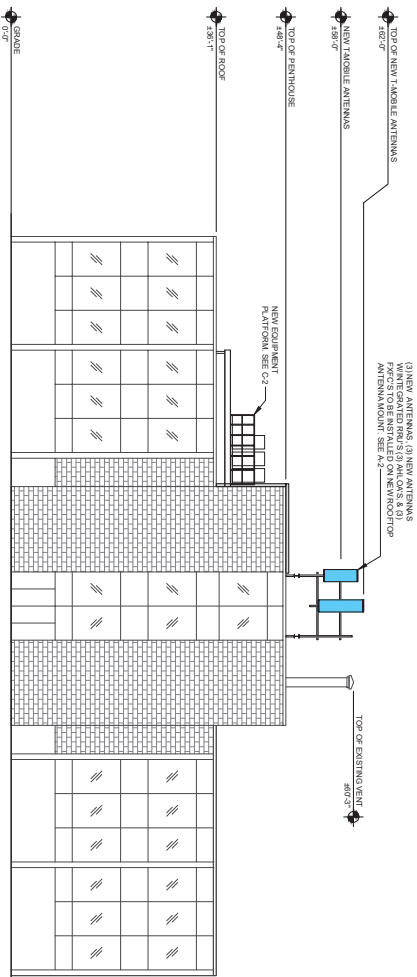


**W.F. COMMERCIAL DESIGN, INC.**  
11818 DOLL RD  
SKOKIE, IL 60077

NOTE  
CONTRACTOR TO VERIFY ALL HEIGHTS AND AZIMUTHS IN FIELD FROM TO CONTRACTOR. CONTRACTOR SHALL VERIFY ALL INFORMATION FOR ACCURACY AND CORRECT ANY DISCREPANCIES BEFORE PROCEEDING.

NOTE  
CONTRACTOR SHALL VERIFY ALL FINAL CONSTRUCTION LOCATIONS WITH T-MOBILE ENGINEER AND BE IN POSSESSION OF INSTALLATION.

NOTE  
A STRUCTURAL ANALYSIS OF THE TOWER OR STRUCTURE HAS BEEN COMPLETED BY THE ARCHITECT. ALL CONTRACTORS SHALL ANALYZE THIS STRUCTURE AND ANALYSIS SHALL SUPERSEDE THESE DRAWINGS.



ELEVATION - NORTH VIEW  
SCALE: 1/8" = 1'-0"

W-F COMMUNICATIONS  
11818 DOLL ROAD  
SKOKIE, IL 60077  
TEL: 847.433.8800  
FAX: 847.433.8801  
WWW.WF-COMM.COM

PROJECT NO. 11818190010 DATE: 12/20/19

DATE PLOTTED: 12/20/19 10:58:23 AM

PROJECT: 11818190010

SHEET NUMBER: A-1

ELEVATION

**ANTENNA & CABLE SCHEDULE**

SECTOR	ALPHA	BETA	GAMMA
LOCATION	A-1	B-1	C-1
TECHNOLOGY	TD-LTE/DOCSIS PCS (MNO)	TD-LTE/DOCSIS PCS (MNO)	TD-LTE/DOCSIS PCS (MNO)
ANTENNA	320'	90'	310'
RAD CENTER	90'	90'	90'
COLOR COATING	RED L81	GREEN L81	BLUE L81
MODEL #	COMSCOPE FTH-HS-C43	COMSCOPE FTH-HS-C43	COMSCOPE FTH-HS-C43
MECHANICAL DOWN T	0	0	0
REAR TYPE	(1) MASTA (1) JUMPER	(1) MASTA (1) JUMPER	(1) MASTA (1) JUMPER
HCS DIA. & TYPE	-	-	-
HCS ACTUAL LENGTH	-	-	-
HCS FACTORY LENGTH	-	-	-
BUNDS DIA. & TYPE	-	-	-
BUNDS FACTORY LENGTH	-	-	-
JUMPER TYPE FROM JUMPER LENGTH	HYBRID JUMPER 90'-0"	HYBRID JUMPER 90'-0"	HYBRID JUMPER 90'-0"
JUMPER TYPE FROM ROOF TO ANTENNA JUMPER LENGTH	HYBRID JUMPER 6'-0"	HYBRID JUMPER 6'-0"	HYBRID JUMPER 6'-0"

NOTE  
CONTRACTOR SHALL VERIFY ALL HEIGHTS AND AZIMUTHS IN FIELD FROM TO CONTRACTOR. CONTRACTOR SHALL VERIFY ALL INFORMATION FOR ACCURACY AND CORRECT ANY DISCREPANCIES BEFORE PROCEEDING.

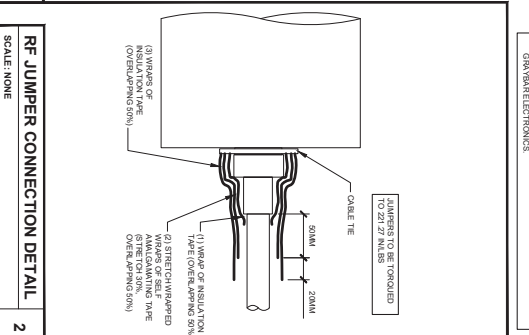
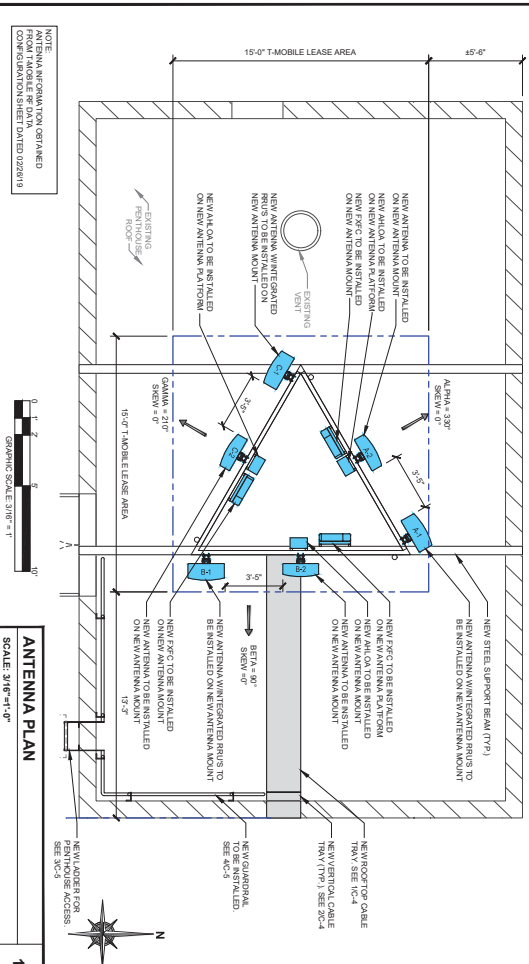
NOTE  
CONTRACTOR SHALL VERIFY ALL FINAL CONSTRUCTION LOCATIONS WITH T-MOBILE ENGINEER AND BE IN POSSESSION OF INSTALLATION.

NOTE  
A STRUCTURAL ANALYSIS OF THE TOWER OR STRUCTURE HAS BEEN COMPLETED BY THE ARCHITECT. ALL CONTRACTORS SHALL ANALYZE THIS STRUCTURE AND ANALYSIS SHALL SUPERSEDE THESE DRAWINGS.

NOTE  
1. ALL ANTENNAS SHALL BE FURNISHED WITH DOWN T RODS TO BE INSTALLED AT THE TOP OF THE TOWER. CONTRACTOR SHALL VERIFY ALL INFORMATION FOR ACCURACY AND CORRECT ANY DISCREPANCIES BEFORE PROCEEDING.

NOTE  
2. CONTRACTOR SHALL VERIFY ALL FINAL CONSTRUCTION LOCATIONS WITH T-MOBILE ENGINEER AND BE IN POSSESSION OF INSTALLATION.

NOTE  
3. CONTRACTOR SHALL VERIFY ALL FINAL CONSTRUCTION LOCATIONS WITH T-MOBILE ENGINEER AND BE IN POSSESSION OF INSTALLATION.



W-F COMMUNICATIONS  
11818 DOLL ROAD  
SKOKIE, IL 60077  
TEL: 847.433.8800  
FAX: 847.433.8801  
WWW.WF-COMM.COM

PROJECT NO. 11818190010 DATE: 12/20/19

DATE PLOTTED: 12/20/19 10:58:23 AM

PROJECT: 11818190010

SHEET NUMBER: A-2

ANTENNA PLAN