

Commute Profile

4800-4836 Golf Rd (0 - 3 miles)
4800-4836 Golf Rd, Skokie, Illinois, 60077
Ring band of 0 - 3 miles

Prepared by Esri
Latitude: 42.05533
Longitude: -87.74693

COMMUTE PROFILE

4800-4836 Golf Rd

This infographic provides information about how population age 16+ travels to work. This data comes from the the American Community Survey (ACS) from the US Census Bureau. Read an in-depth analysis of the ACS from Esri's data team www.esri.com/software/american-community-survey.

WORKERS



67,033

ACS Workers Age 16+



67.3%

Drove Alone to Work

TRANSPORTATION TO WORK



12.6%

Took Public Transportation



8.5%

Carpooled



2.5%

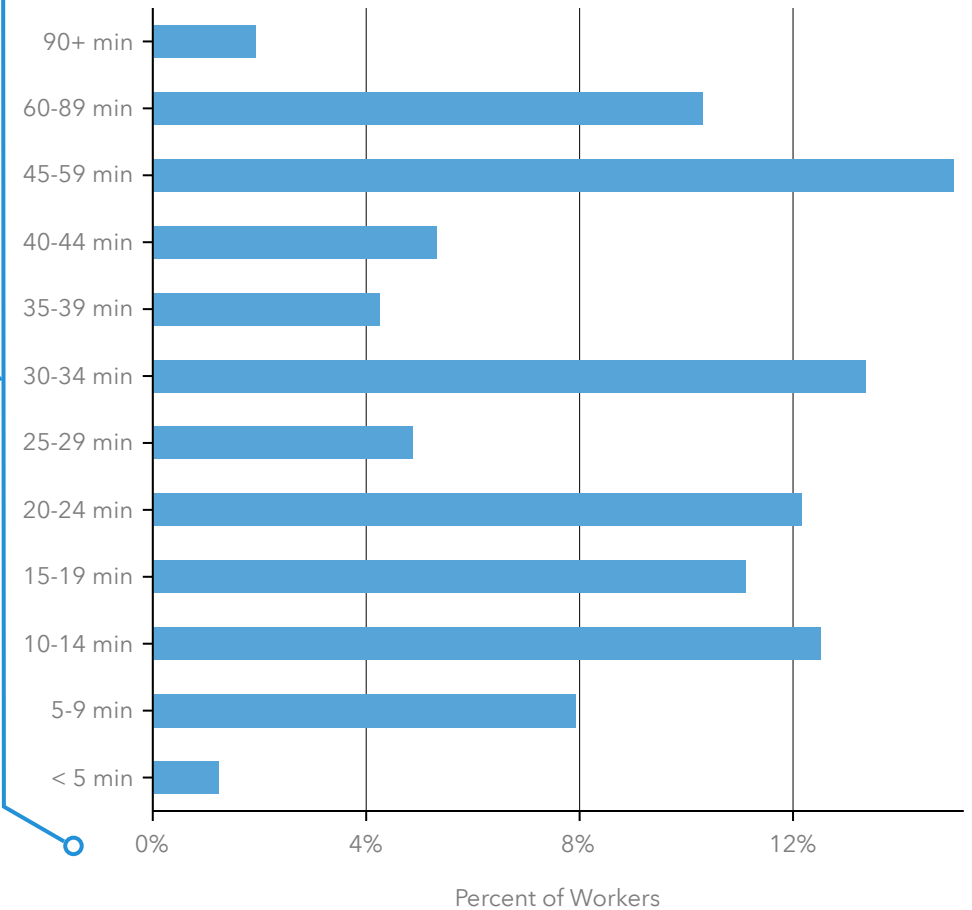
Walked to Work



1.1%

Bike to Work

TRAVEL TIME TO WORK



Commute Profile

4800-4836 Golf Rd (3 - 5 miles)
4800-4836 Golf Rd, Skokie, Illinois, 60077
Ring band of 3 - 5 miles

Prepared by Esri
Latitude: 42.05533
Longitude: -87.74693

COMMUTE PROFILE

4800-4836 Golf Rd

This infographic provides information about how population age 16+ travels to work. This data comes from the the American Community Survey (ACS) from the US Census Bureau. Read an in-depth analysis of the ACS from Esri's data team www.esri.com/software/american-community-survey.

WORKERS



121,333

ACS Workers Age 16+



61.1%

Drove Alone to Work

TRANSPORTATION TO WORK



17.5%

Took Public Transportation



7.8%

Carpooled



5.1%

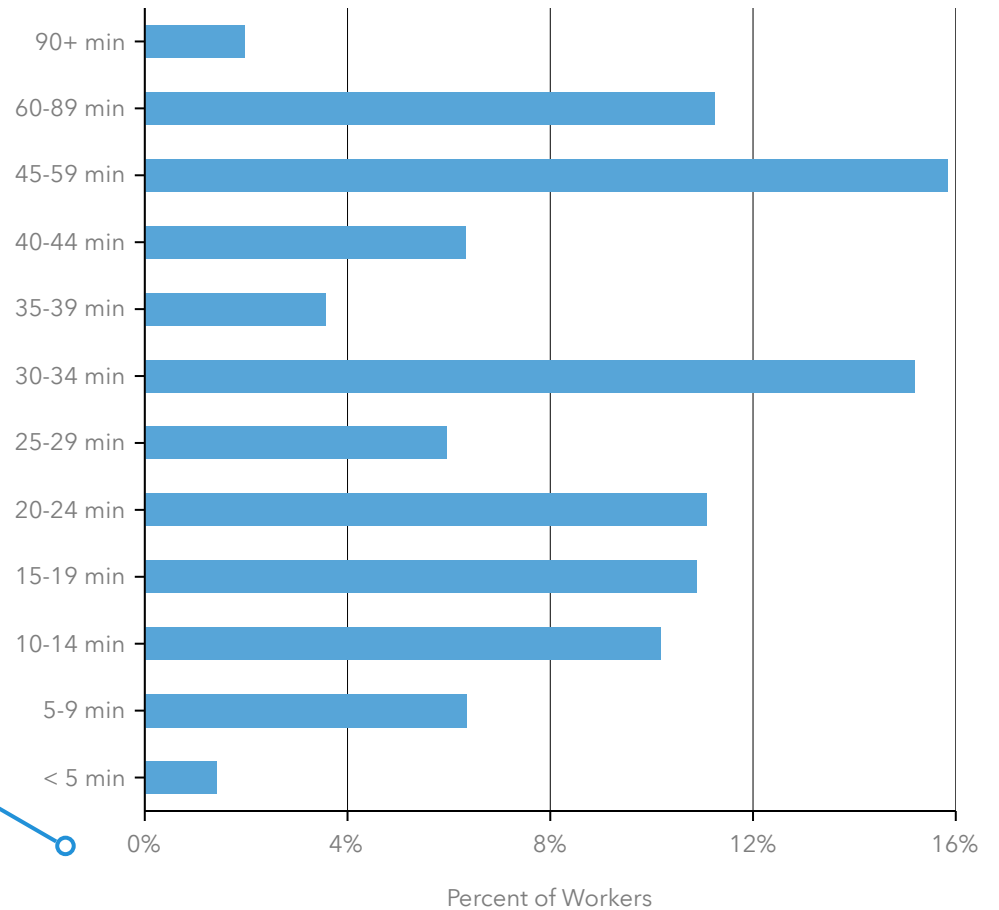
Walked to Work



1.3%

Bike to Work

TRAVEL TIME TO WORK



Commute Profile

4800-4836 Golf Rd (5 - 7 miles)
4800-4836 Golf Rd, Skokie, Illinois, 60077
Ring band of 5 - 7 miles

Prepared by Esri
Latitude: 42.05533
Longitude: -87.74693

COMMUTE PROFILE

4800-4836 Golf Rd

This infographic provides information about how population age 16+ travels to work. This data comes from the the American Community Survey (ACS) from the US Census Bureau. Read an in-depth analysis of the ACS from Esri's data team www.esri.com/software/american-community-survey

WORKERS



226,787

ACS Workers Age 16+



55.7%

Drove Alone to Work

TRANSPORTATION TO WORK



25.5%

Took Public Transportation



7.2%

Carpooled



4.0%

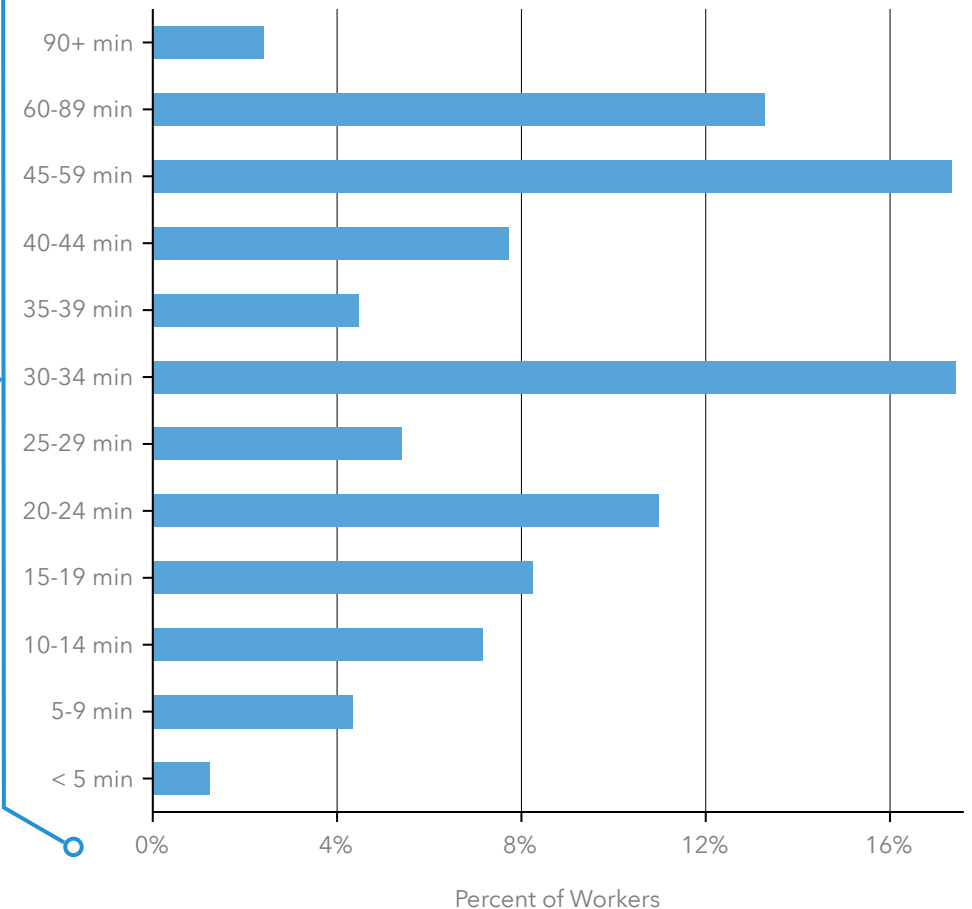
Walked to Work



1.2%

Bike to Work

TRAVEL TIME TO WORK



Employment Overview

4800-4836 Golf Rd (0 - 3 miles)
4800-4836 Golf Rd, Skokie, Illinois, 60077
Ring band of 0 - 3 miles

Prepared by Esri
Latitude: 42.05533
Longitude: -87.74693

Employment Overview

4800-4836 Golf Rd



INCOME

\$93,179
Median Household Income

\$52,018
Per Capita Income

\$434,521
Median Net Worth

EDUCATION

6%
No High School Diploma

13%
High School Diploma

20%
Some College

59%
Bachelor's/Grad/Prof Degree

BUSINESS

5,944
Total Businesses

73,069
Total Employees

KEY FACTS

145,547
Population

53,207
Households

44.5
Median Age

\$69,327
Median Disposable Income

COMMUTERS

20%
Spend 7+ hours commuting to and from work per week

67.3%
Drove Alone to Work

EMPLOYMENT

78%
White Collar

11%
Blue Collar

11%
Services

3.4%
Unemployment Rate

Employment Overview

4800-4836 Golf Rd (3 - 5 miles)
4800-4836 Golf Rd, Skokie, Illinois, 60077
Ring band of 3 - 5 miles

Prepared by Esri
Latitude: 42.05533
Longitude: -87.74693

Employment Overview

4800-4836 Golf Rd



INCOME

\$78,584
Median Household Income

\$45,826
Per Capita Income

\$184,312
Median Net Worth

EDUCATION

8%
No High School Diploma

15%
High School Diploma

19%
Some College

55%
Bachelor's/Grad/Prof Degree

BUSINESS

9,899
Total Businesses

135,715
Total Employees

KEY FACTS

260,914
Population

99,015
Households

40.7
Median Age

\$59,037
Median Disposable Income

COMMUTERS

20%
Spend 7+ hours commuting to and from work per week

61.1%
Drove Alone to Work

EMPLOYMENT

73%
White Collar

13%
Blue Collar

14%
Services

3.7%
Unemployment Rate

Employment Overview

4800-4836 Golf Rd (5 - 7 miles)
4800-4836 Golf Rd, Skokie, Illinois, 60077
Ring band of 5 - 7 miles

Prepared by Esri
Latitude: 42.05533
Longitude: -87.74693

Employment Overview

4800-4836 Golf Rd



INCOME

\$63,275
Median Household Income

\$37,867
Per Capita Income

\$71,850
Median Net Worth

EDUCATION

10%
No High School Diploma

17%
High School Diploma

22%
Some College

49%
Bachelor's/Grad/Prof Degree

BUSINESS

12,698
Total Businesses

154,131
Total Employees

KEY FACTS

427,366
Population

172,988
Households

38.7
Median Age

\$50,614
Median Disposable Income

COMMUTERS

20%
Spend 7+ hours commuting to and from work per week

55.7%
Drove Alone to Work

EMPLOYMENT

66%
White Collar

18%
Services

16%
Blue Collar

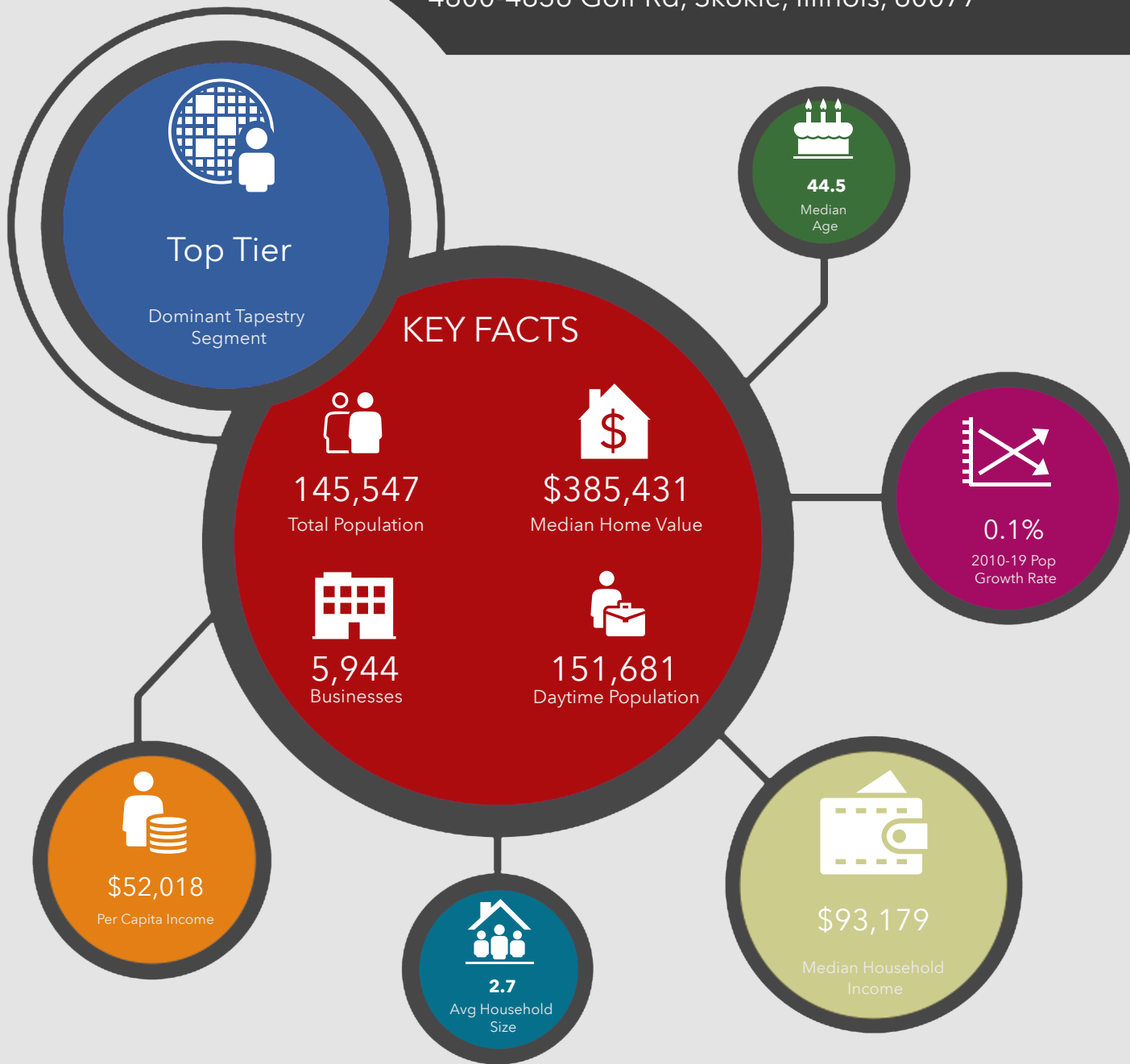
3.6%
Unemployment Rate

Executive Summary - Call Outs

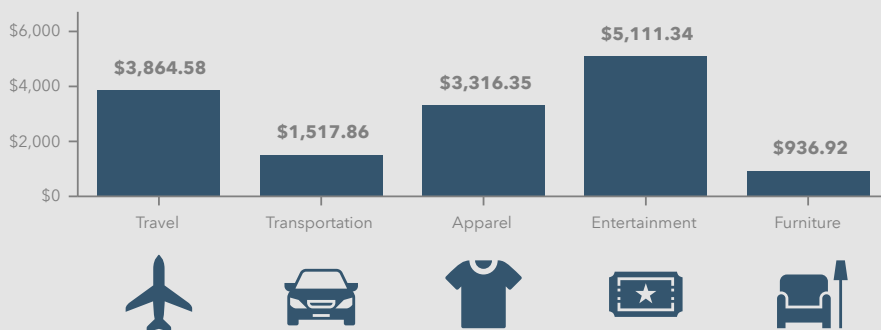
4800-4836 Golf Rd (0 - 3 miles)
4800-4836 Golf Rd, Skokie, Illinois, 60077
Ring band of 0 - 3 miles

Prepared by Esri
Latitude: 42.05533
Longitude: -87.74693

4800-4836 Golf Rd, Skokie, Illinois, 60077



KEY SPENDING FACTS

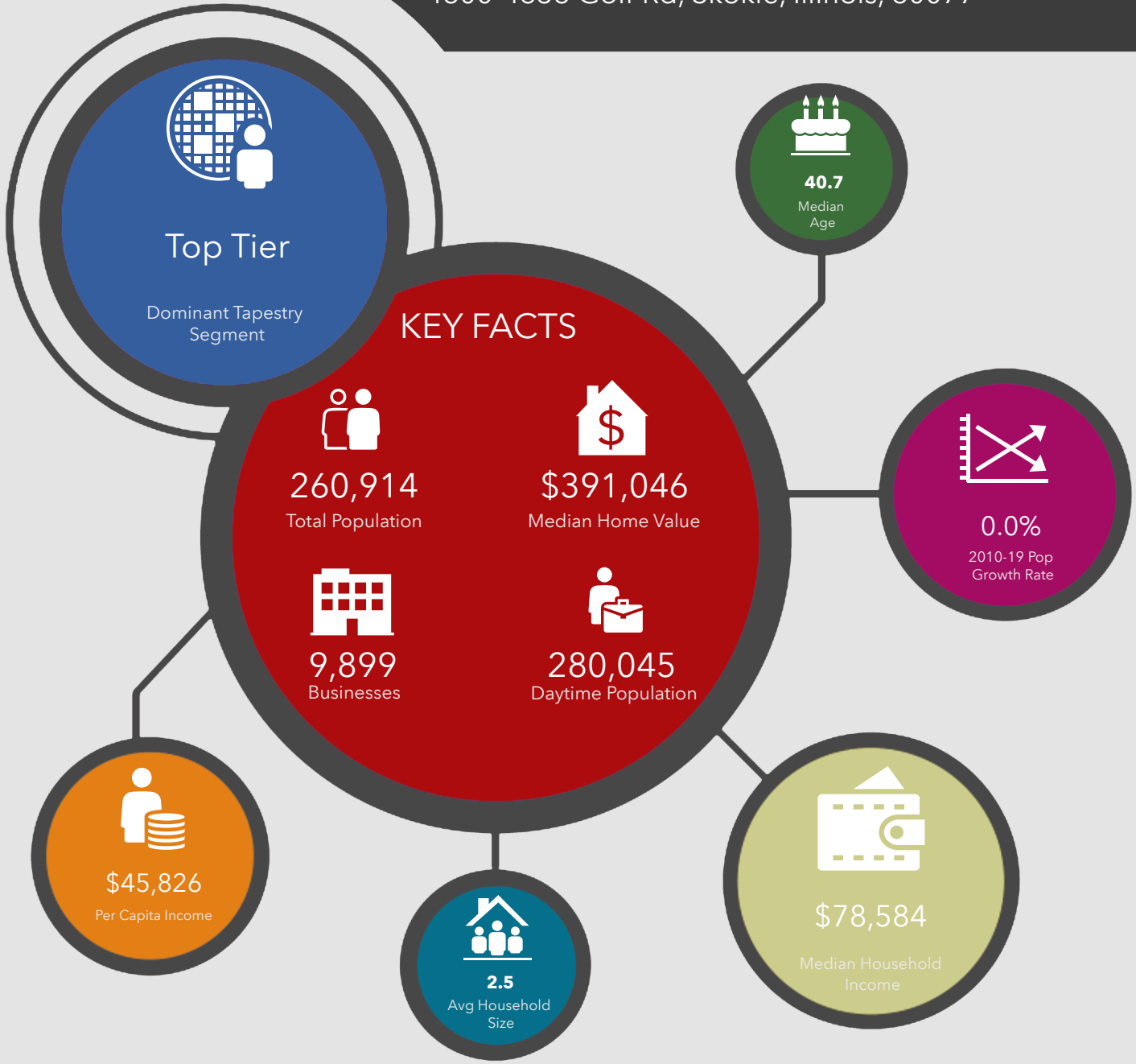


Executive Summary - Call Outs

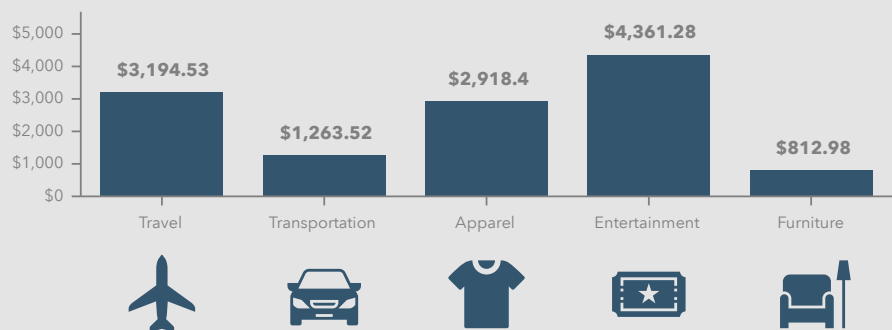
4800-4836 Golf Rd (3 - 5 miles)
4800-4836 Golf Rd, Skokie, Illinois, 60077
Ring band of 3 - 5 miles

Prepared by Esri
Latitude: 42.05533
Longitude: -87.74693

4800-4836 Golf Rd, Skokie, Illinois, 60077



KEY SPENDING FACTS

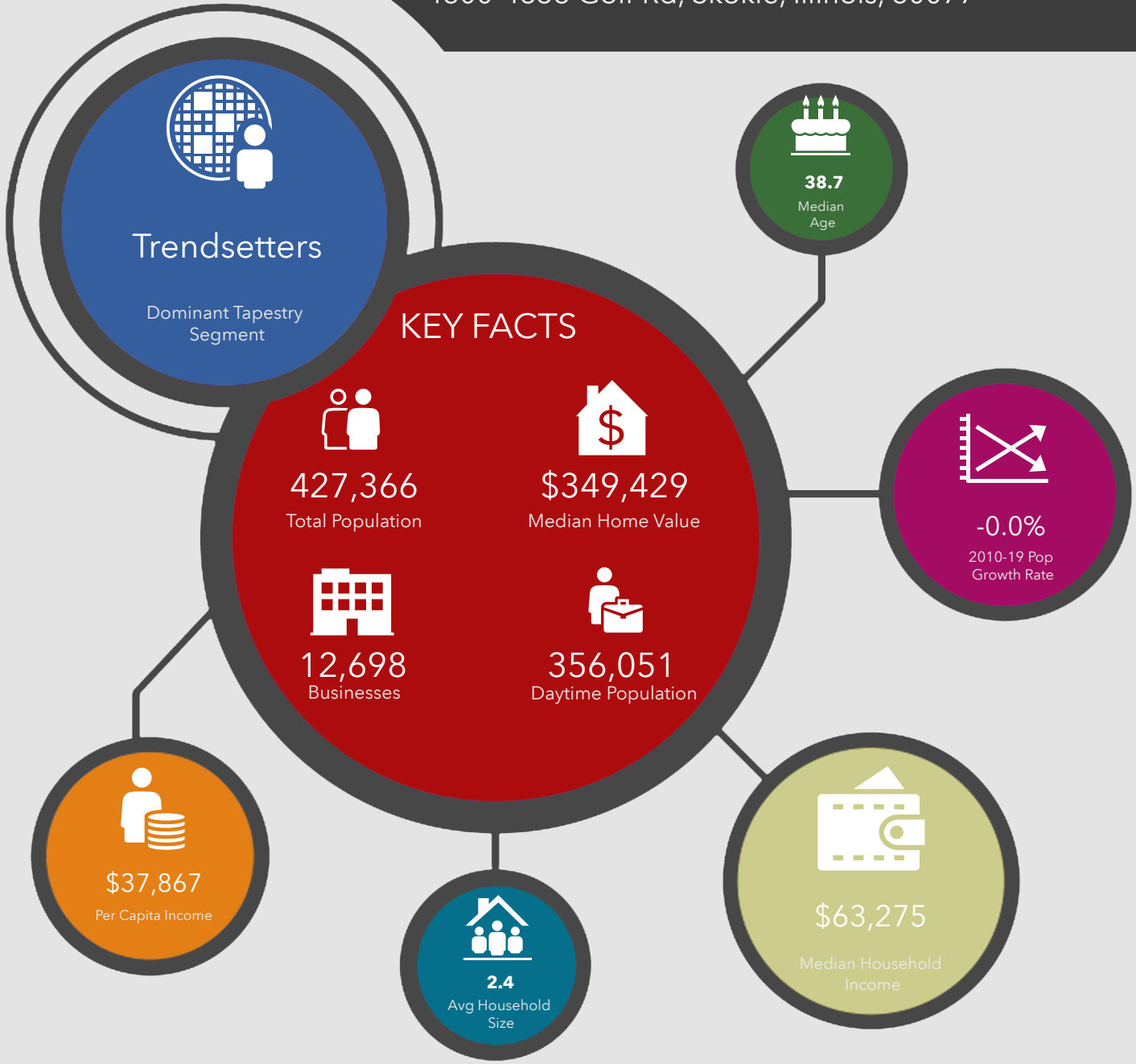


Executive Summary - Call Outs

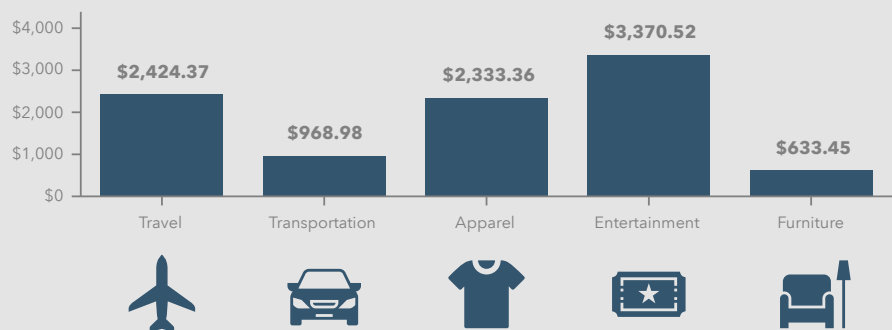
4800-4836 Golf Rd (5 - 7 miles)
4800-4836 Golf Rd, Skokie, Illinois, 60077
Ring band of 5 - 7 miles

Prepared by Esri
Latitude: 42.05533
Longitude: -87.74693

4800-4836 Golf Rd, Skokie, Illinois, 60077



KEY SPENDING FACTS



Health Care

4800-4836 Golf Rd (0 - 3 miles)
 4800-4836 Golf Rd, Skokie, Illinois, 60077
 Ring band of 0 - 3 miles

Prepared by Esri
 Latitude: 42.05533
 Longitude: -87.74693

HAS ONE TYPE OF HEALTH INSURANCE



23.6%
 Pop <19

11.7%
 Pop 19-34

36.9%
 Pop 35-64

6%
 Pop 65+

POPULATION (ACS)



24.9%
 Pop <19



14%
 Pop 19-34



42.2%
 Pop 35-64



18.6%
 Pop 65+

NO HEALTH INSURANCE



0.4%
 ACS Pop <19

2.1%
 Pop 19-34

3.5%
 Pop 35-64

0.2%
 Pop 65+

HEALTH CARE

4800-4836 Golf Rd, Skokie, Illinois, 60077

This infographic provides a set of key demographic and health care indicators. Data sources include: American Community Survey (ACS) 5-year Data, Esri Consumer Spending, and Esri Market Potential data.

Learn more about this data: www.esri.com/data/esri_data.

HEALTH CARE EXPENDITURES



\$5,828
 Annual Health Insurance Expenditures



\$2,957
 Medical Care

Health Care (Consumer Spending)	Annual Expenditure
Blue Cross/Blue Shield	\$1,741
Medicare Payments	\$941
Physician Services	\$389
Dental Services	\$629
Eyecare Services	\$100
Lab Tests/X-rays	\$89
Hospital Room & Hospital Service	\$243
Convalescent/Nursing Home Care	\$26

Health Care

4800-4836 Golf Rd (0 - 3 miles)
4800-4836 Golf Rd, Skokie, Illinois, 60077
Ring band of 0 - 3 miles

Prepared by Esri
Latitude: 42.05533
Longitude: -87.74693

POPULATION



145,584

Civilian Population (ACS)

EXERCISE (PERCENT OF ADULTS)



30.6%

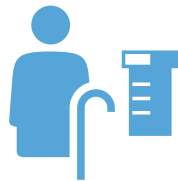
Exercise at home 2+ times per week



20.3%

Exercise at club 2+ times per week

MEDICARE: POPULATION 65+



6,576

Medicare Only

7,361

Direct-Purch & Medicare

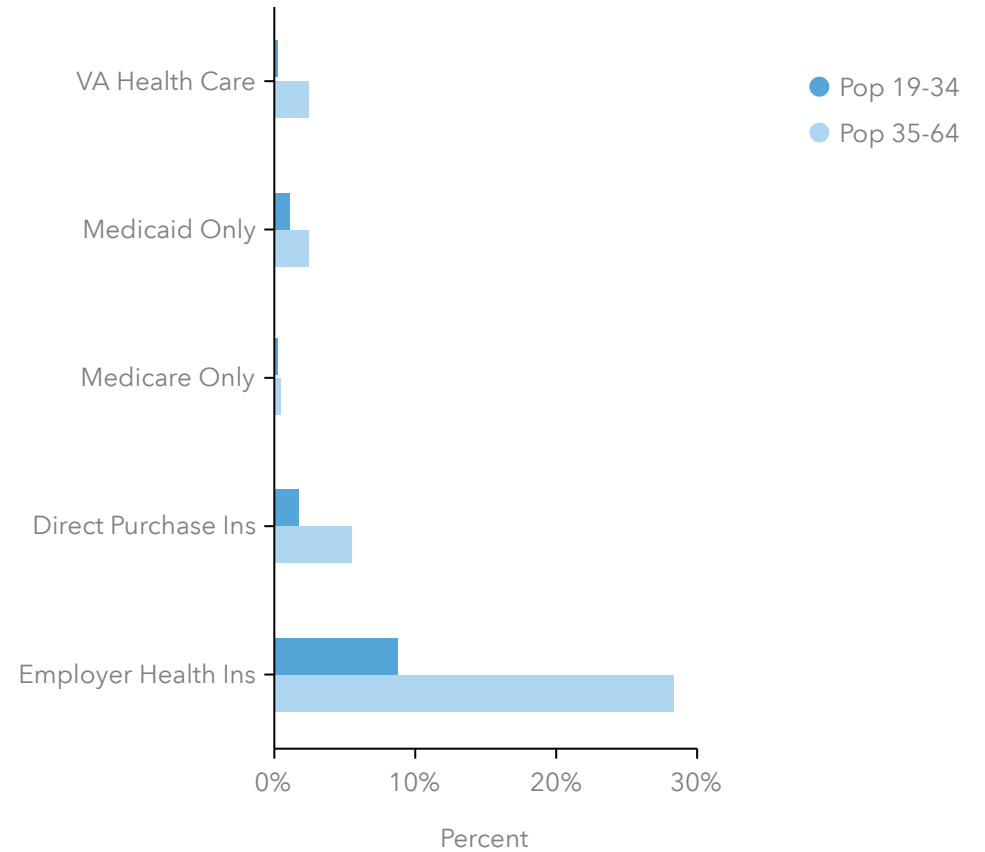
4,914

Employer & Medicare

2,903

Medicare & Medicaid

HEALTH CARE SPENDING



Health Care

4800-4836 Golf Rd (3 - 5 miles)
 4800-4836 Golf Rd, Skokie, Illinois, 60077
 Ring band of 3 - 5 miles

Prepared by Esri
 Latitude: 42.05533
 Longitude: -87.74693

HAS ONE TYPE OF HEALTH INSURANCE



22.9%
Pop <19

16.5%
Pop 19-34

32.8%
Pop 35-64

5%
Pop 65+

POPULATION (ACS)



24.3%
Pop <19



21%
Pop 19-34



38.9%
Pop 35-64



16.2%
Pop 65+

NO HEALTH INSURANCE



0.5%
ACS Pop <19

3.4%
Pop 19-34

4.1%
Pop 35-64

0.3%
Pop 65+

HEALTH CARE

4800-4836 Golf Rd, Skokie, Illinois, 60077

This infographic provides a set of key demographic and health care indicators. Data sources include: American Community Survey (ACS) 5-year Data, Esri Consumer Spending, and Esri Market Potential data.

Learn more about this data: www.esri.com/data/esri_data.

HEALTH CARE EXPENDITURES



\$4,974
Annual Health Insurance Expenditures



\$2,509
Medical Care

Health Care (Consumer Spending)	Annual Expenditure
Blue Cross/Blue Shield	\$1,478
Medicare Payments	\$803
Physician Services	\$334
Dental Services	\$518
Eyecare Services	\$83
Lab Tests/X-rays	\$77
Hospital Room & Hospital Service	\$209
Convalescent/Nursing Home Care	\$22

Health Care

4800-4836 Golf Rd (3 - 5 miles)
4800-4836 Golf Rd, Skokie, Illinois, 60077
Ring band of 3 - 5 miles

Prepared by Esri
Latitude: 42.05533
Longitude: -87.74693

POPULATION



261,868

Civilian Population (ACS)

EXERCISE (PERCENT OF ADULTS)



29.2%

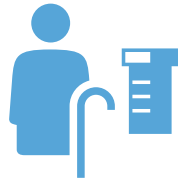
Exercise at home 2+ times per week



19.6%

Exercise at club 2+ times per week

MEDICARE: POPULATION 65+



11,000

Medicare Only

11,783

Direct-Purch & Medicare

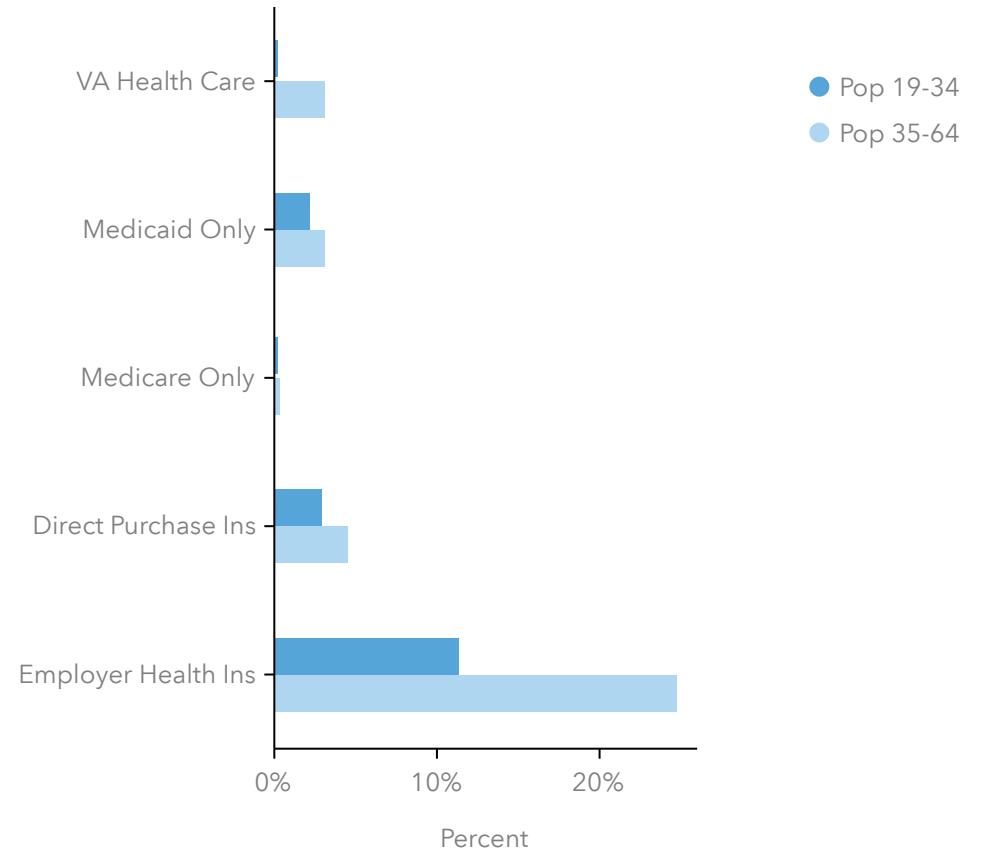
8,467

Employer & Medicare

3,393

Medicare & Medicaid

HEALTH CARE SPENDING



Health Care

4800-4836 Golf Rd (5 - 7 miles)
 4800-4836 Golf Rd, Skokie, Illinois, 60077
 Ring band of 5 - 7 miles

Prepared by Esri
 Latitude: 42.05533
 Longitude: -87.74693

HAS ONE TYPE OF HEALTH INSURANCE



19.5%
Pop <19

19.2%
Pop 19-34

32.5%
Pop 35-64

5%
Pop 65+

POPULATION (ACS)



20.9%
Pop <19



25%
Pop 19-34



40.6%
Pop 35-64



13.7%
Pop 65+

NO HEALTH INSURANCE



0.7%
ACS Pop <19

4.8%
Pop 19-34

6.1%
Pop 35-64

0.2%
Pop 65+

HEALTH CARE

4800-4836 Golf Rd, Skokie, Illinois, 60077

This infographic provides a set of key demographic and health care indicators. Data sources include: American Community Survey (ACS) 5-year Data, Esri Consumer Spending, and Esri Market Potential data.

Learn more about this data: www.esri.com/data/esri_data.

HEALTH CARE EXPENDITURES



\$3,802
Annual Health Insurance Expenditures



\$1,899
Medical Care

Health Care (Consumer Spending)	Annual Expenditure
Blue Cross/Blue Shield	\$1,121
Medicare Payments	\$600
Physician Services	\$255
Dental Services	\$389
Eyecare Services	\$62
Lab Tests/X-rays	\$57
Hospital Room & Hospital Service	\$160
Convalescent/Nursing Home Care	\$16

Health Care

4800-4836 Golf Rd (5 - 7 miles)
4800-4836 Golf Rd, Skokie, Illinois, 60077
Ring band of 5 - 7 miles

Prepared by Esri
Latitude: 42.05533
Longitude: -87.74693

POPULATION



430,915

Civilian Population (ACS)

EXERCISE (PERCENT OF ADULTS)



28.0%

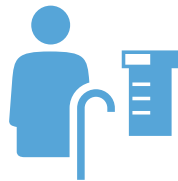
Exercise at home 2+ times per week



18.4%

Exercise at club 2+ times per week

MEDICARE: POPULATION 65+



18,113

Medicare Only

13,324

Direct-Purch & Medicare

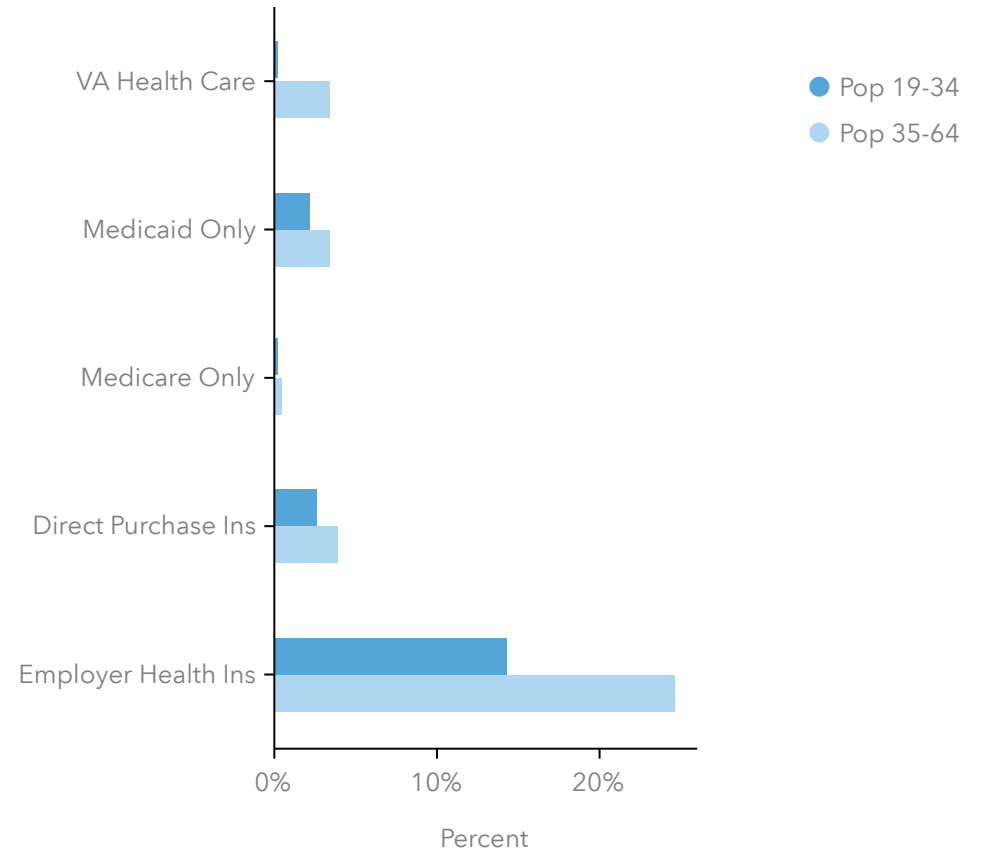
9,681

Employer & Medicare

7,067

Medicare & Medicaid

HEALTH CARE SPENDING



Marketing Profile

4800-4836 Golf Rd (0 - 3 miles)
 4800-4836 Golf Rd, Skokie, Illinois, 60077
 Ring band of 0 - 3 miles

Prepared by Esri
 Latitude: 42.05533
 Longitude: -87.74693

MARKETING PROFILE

4800-4836 Golf Rd

Ring band of 0 - 3 miles



KEY FACTS

145,547

Population

44.5

Median Age



Average Household Size

\$93,179

Median Household Income

ANNUAL HOUSEHOLD SPENDING



\$3,316

Apparel & Services



\$265

Computers & Hardware



\$5,611

Eating Out



\$7,680

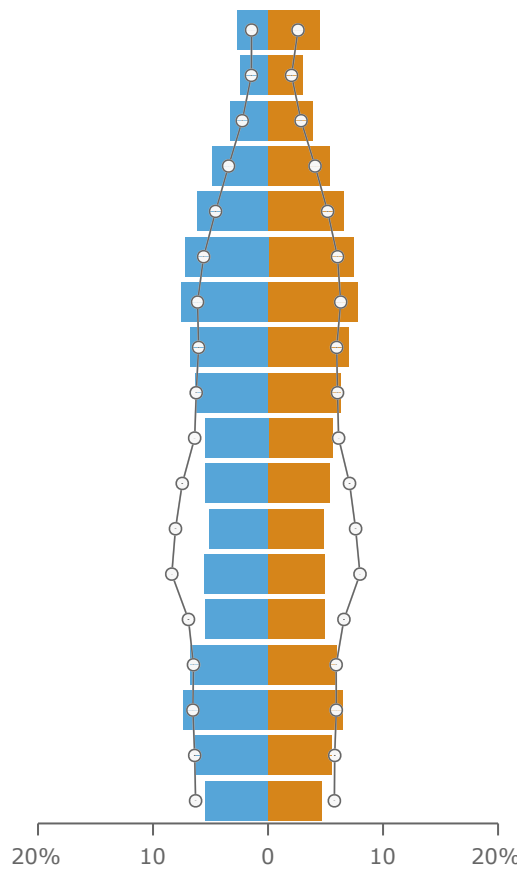
Groceries



\$8,784

Health Care

Age Pyramid



The largest group:
 2019 Female Population Age 55-59 (Esri)

The smallest group:
 2019 Male Population Age 80-84 (Esri)

Dots show comparison to Cook County

EDUCATION

6%

No High School Diploma



15%

High School Graduate



20%

Some College



59%

Bachelor's/Grad/Prof Degree

ANNUAL LIFESTYLE SPENDING



\$3,865

Travel



\$142

Theatre/Operas/Concerts



\$140

Movies/Museums/Parks



\$106

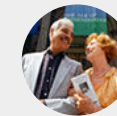
Sports Events



\$7

Online Games

Tapestry Segments



1A

Top Tier

10,997 households

20.7%

of Households



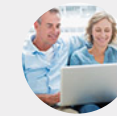
2C

Pacific Heights

7,503 households

14.1%

of Households



2B

Pleasantville

6,455 households

12.1%

of Households

Marketing Profile

4800-4836 Golf Rd (3 - 5 miles)
 4800-4836 Golf Rd, Skokie, Illinois, 60077
 Ring band of 3 - 5 miles

Prepared by Esri
 Latitude: 42.05533
 Longitude: -87.74693

MARKETING PROFILE

4800-4836 Golf Rd
 Ring band of 3 - 5 miles



Ring band of 3 - 5 miles

KEY FACTS

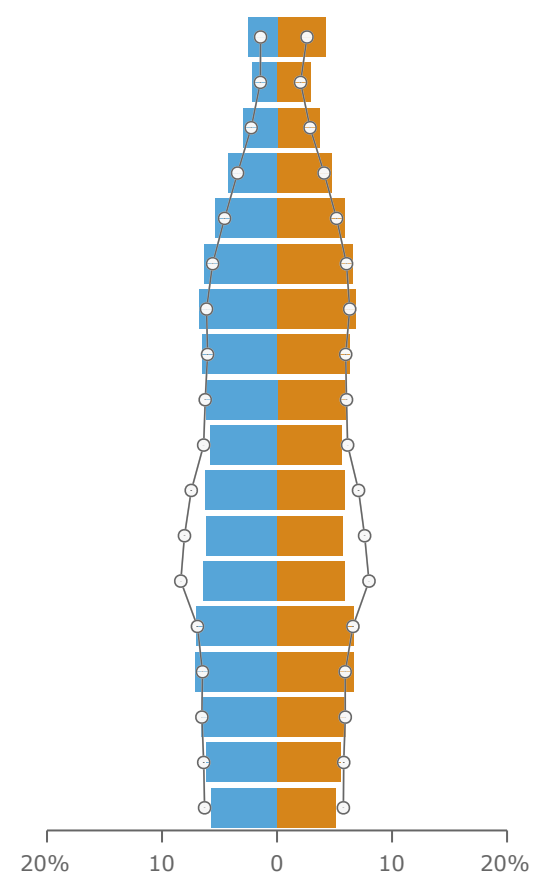
260,914
Population

40.7
Median Age

2.5
Average Household Size

\$78,584
Median Household Income

Age Pyramid

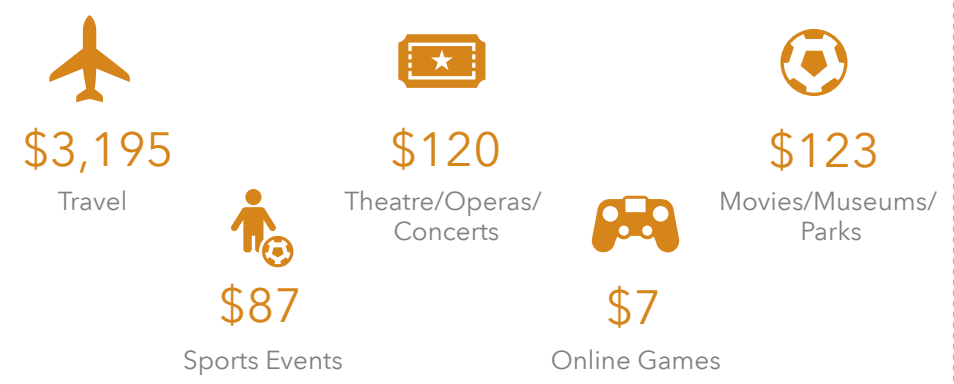


The largest group:
2019 Female Population Age 55-59 (Esri)

The smallest group:
2019 Male Population Age 80-84 (Esri)

Dots show comparison to Cook County

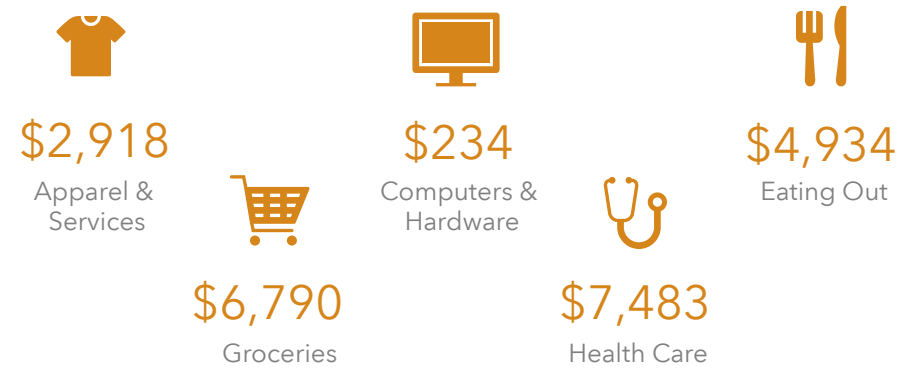
ANNUAL LIFESTYLE SPENDING



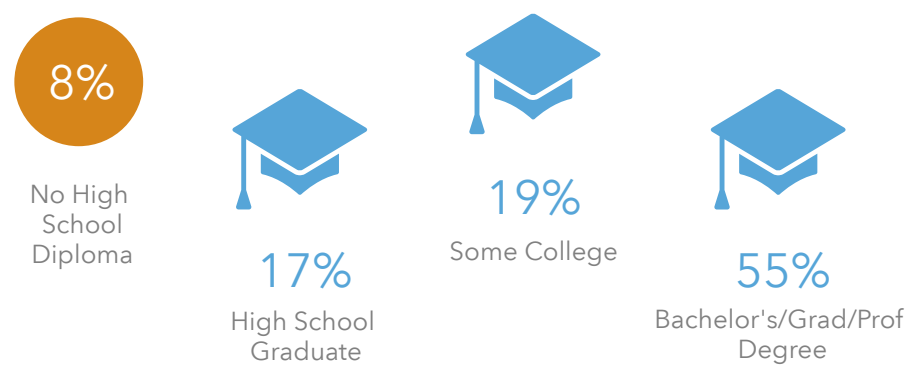
Tapestry Segments

	1A Top Tier 11,048 households	11.2% of Households
	2B Pleasantville 10,769 households	10.9% of Households
	8A City Lights 9,908 households	10.0% of Households

ANNUAL HOUSEHOLD SPENDING



EDUCATION



Marketing Profile

4800-4836 Golf Rd (5 - 7 miles)
 4800-4836 Golf Rd, Skokie, Illinois, 60077
 Ring band of 5 - 7 miles

Prepared by Esri
 Latitude: 42.05533
 Longitude: -87.74693

MARKETING PROFILE

4800-4836 Golf Rd

Ring band of 5 - 7 miles



KEY FACTS

427,366

Population

38.7

Median Age



2.4

Average Household Size

\$63,275

Median Household Income

ANNUAL HOUSEHOLD SPENDING



\$2,333

Apparel & Services



\$187

Computers & Hardware



\$3,941

Eating Out



\$5,443

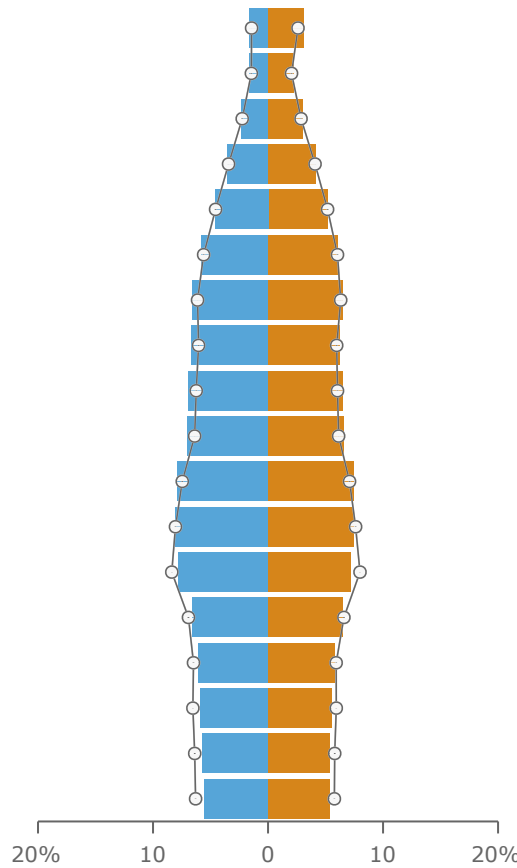
Groceries



\$5,701

Health Care

Age Pyramid



The largest group:
 2019 Male Population
 Age 30-34 (Esri)

The smallest group:
 2019 Male Population
 Age 80-84 (Esri)

Dots show comparison to
 Cook County

ANNUAL LIFESTYLE SPENDING



\$2,424

Travel



\$92

Theatre/Operas/
 Concerts



\$100

Movies/Museums/
 Parks



\$65

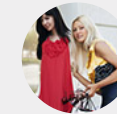
Sports Events



\$5

Online Games

Tapestry Segments



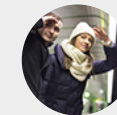
3C

Trendsetters

29,272 households

16.9%

of Households



8A

City Lights

25,961 households

15.0%

of Households



13A

International Marketplace

25,368 households

14.7%

of Households

EDUCATION

10%

No High School Diploma



19%

High School Graduate



22%

Some College



49%

Bachelor's/Grad/Prof Degree

Office Market Profile

4800-4836 Golf Rd (0 - 3 miles)
4800-4836 Golf Rd, Skokie, Illinois, 60077
Ring band of 0 - 3 miles

Prepared by Esri
Latitude: 42.05533
Longitude: -87.74693

OFFICE MARKET PROFILE

This infographic provides a set of key demographic, market potential and spending indicators that allow you to quickly understand the market opportunities and demographics of an area that provide powerful decision-making insight about office location.
Data sources include: Esri Consumer Spending and Esri Market Potential data.
Learn more about this data: www.esri.com/data/esri_data



PROJECTED ANNUAL GROWTH RATE



-0.05%

Population



-1.78%

Generation Z



0.27%

Generation X



1.55%

Millennial



INTERNET ACCESS (INDEX)



106

Access to Internet at home



107

Internet at home via high speed connection

LIFESTYLE SPENDING (INDEX)



152

Meals at
Restaurants



156

Entertainment/
Recreation



151

Retail Goods



155

Apparel & Services



159

Home Services



INCOME AND HOME VALUE



\$93,179

Median Household
Income



\$52,018

Per Capita Income



\$385,431

Median Home
Value

Office Market Profile

4800-4836 Golf Rd (3 - 5 miles)
4800-4836 Golf Rd, Skokie, Illinois, 60077
Ring band of 3 - 5 miles

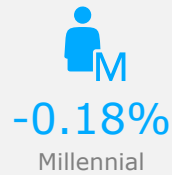
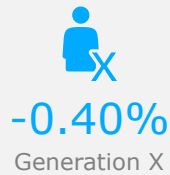
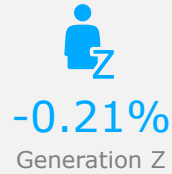
Prepared by Esri
Latitude: 42.05533
Longitude: -87.74693

OFFICE MARKET PROFILE

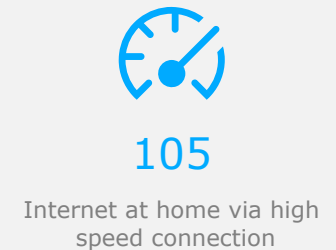
This infographic provides a set of key demographic, market potential and spending indicators that allow you to quickly understand the market opportunities and demographics of an area that provide powerful decision-making insight about office location.
Data sources include: Esri Consumer Spending and Esri Market Potential data.
Learn more about this data: www.esri.com/data/esri_data



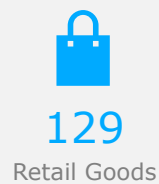
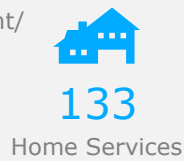
PROJECTED ANNUAL GROWTH RATE



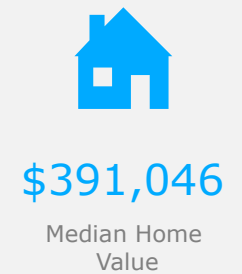
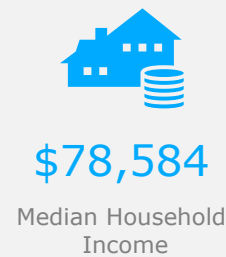
INTERNET ACCESS (INDEX)



LIFESTYLE SPENDING (INDEX)



INCOME AND HOME VALUE



Office Market Profile

4800-4836 Golf Rd (5 - 7 miles)
4800-4836 Golf Rd, Skokie, Illinois, 60077
Ring band of 5 - 7 miles

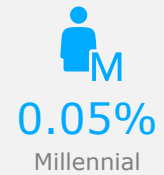
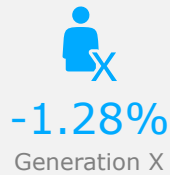
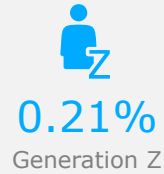
Prepared by Esri
Latitude: 42.05533
Longitude: -87.74693

OFFICE MARKET PROFILE

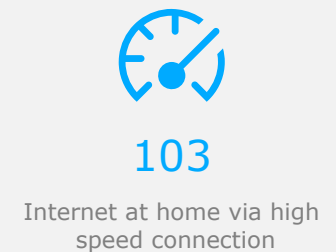
This infographic provides a set of key demographic, market potential and spending indicators that allow you to quickly understand the market opportunities and demographics of an area that provide powerful decision-making insight about office location.
Data sources include: Esri Consumer Spending and Esri Market Potential data.
Learn more about this data: www.esri.com/data/esri_data



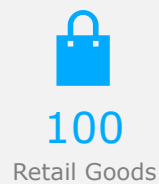
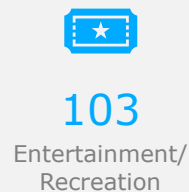
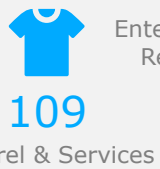
PROJECTED ANNUAL GROWTH RATE



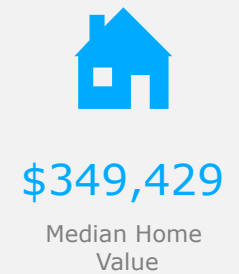
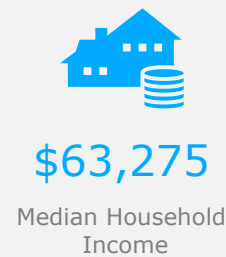
INTERNET ACCESS (INDEX)



LIFESTYLE SPENDING (INDEX)



INCOME AND HOME VALUE



Target Market Summary

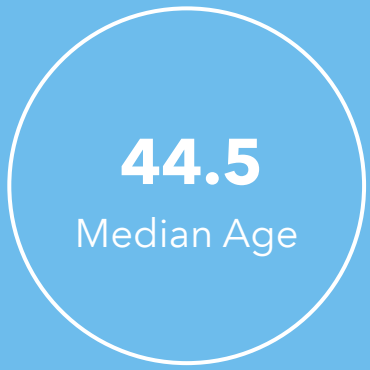
4800-4836 Golf Rd (0 - 3 miles)
 4800-4836 Golf Rd, Skokie, Illinois, 60077
 Ring band of 0 - 3 miles

Prepared by Esri
 Latitude: 42.05533
 Longitude: -87.74693

TARGET MARKET SUMMARY

4800-4836 Golf Rd
 Ring band of 0 - 3 miles

KEY FACTS

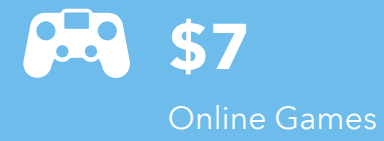
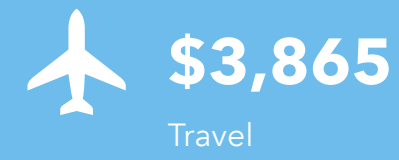


AGE PYRAMID



The largest group: 2019 Female Population Age 55-59 (Esri)
The smallest group: 2019 Male Population Age 80-84 (Esri)

ANNUAL LIFESTYLE SPENDING



Tapestry Segments



Target Market Summary

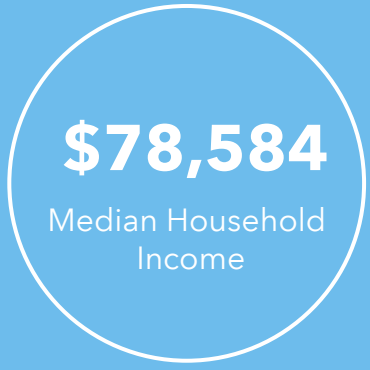
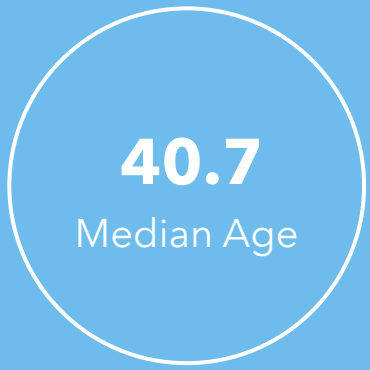
4800-4836 Golf Rd (3 - 5 miles)
 4800-4836 Golf Rd, Skokie, Illinois, 60077
 Ring band of 3 - 5 miles

Prepared by Esri
 Latitude: 42.05533
 Longitude: -87.74693

TARGET MARKET SUMMARY

4800-4836 Golf Rd
 Ring band of 3 - 5 miles

KEY FACTS

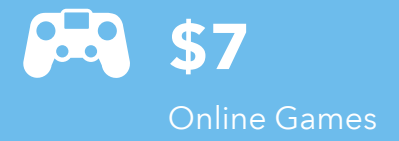


AGE PYRAMID



The largest group: 2019 Female Population Age 55-59 (Esri)
The smallest group: 2019 Male Population Age 80-84 (Esri)

ANNUAL LIFESTYLE SPENDING



Tapestry Segments



Target Market Summary

4800-4836 Golf Rd (5 - 7 miles)
4800-4836 Golf Rd, Skokie, Illinois, 60077
Ring band of 5 - 7 miles

Prepared by Esri
Latitude: 42.05533
Longitude: -87.74693

TARGET MARKET SUMMARY

4800-4836 Golf Rd
Ring band of 5 - 7 miles

KEY FACTS

427,366
Population

38.7
Median Age

2.4
Average
Household Size

\$63,275
Median Household
Income



AGE PYRAMID



The largest group:
2019 Male Population
Age 30-34 (Esri)

The smallest group:
2019 Male Population
Age 80-84 (Esri)

ANNUAL LIFESTYLE SPENDING



\$2,424

Travel



\$92

Theatre/Operas/Concerts



\$100

Movies/Museums/ Parks



\$65

Sports Events



\$5

Online Games



\$102

Audio

Tapestry Segments



3C

Trendsetters
29,272 households

16.9%
of Households



8A

City Lights
25,961 households

15.0%
of Households



13A

International Marketplace
25,368 households

14.7%
of Households